



National Institute for Public Health  
and the Environment  
*Ministry of Health, Welfare and Sport*

# Work programme EURL-*Salmonella* 2023- 2024 Closure

Kirsten Mooijman



Co-funded by the  
European Union



# Work programme 2023-2024

- › Due to late adoption of the SMP (Single Market Programme Regulation) Work Programme for 2023-2024 by the European Commission (February 2023), the call for the EURLs to submit their work programmes for 2023-2024 was sent late.
- › January 2023: sending draft EURL-*Salmonella* work programme 2023-2024 to desk officer DG SANTE for feedback.
- › 28 April 2023: information session HaDEA about new procedure for submitting proposal.
- › 2 May 2023: formal call to submit proposal, deadline 15 June 2023.
- › Evaluation proposals by HaDEA until approx. November 2023.
- › Grant agreement preparation approx. Nov 2023 – Jan 2024.
- › Signature grant agreement approx. January-February 2024.





## Movement of RIVM to new building - delayed

- › The National Institute for Public Health and the Environment (RIVM), where *EURL-Salmonella* is situated, is building a new building in Utrecht.
- › Movement is again seriously delayed: New building not ready before 2025.





# Work programme template

New template for drafting work programme also follows Regulation (EU) 625/2017, Article 94(2) and is subdivided in 4 main activities:

1. To ensure availability and use of high-quality methods and to ensure high quality performance by NRLs;
2. To provide scientific and technical assistance to NRLs;
3. To provide scientific and technical assistance to the European Commission and other organisations;
4. Reagents and reference collections.



# Activity 1 – Methods and performance NRLs

Work Packages:  
(before called sub-activities)

1.1 Analytical methods

1.2 EURLs working group on  
NGS

1.3 Proficiency Tests





# 1.1 Analytical methods

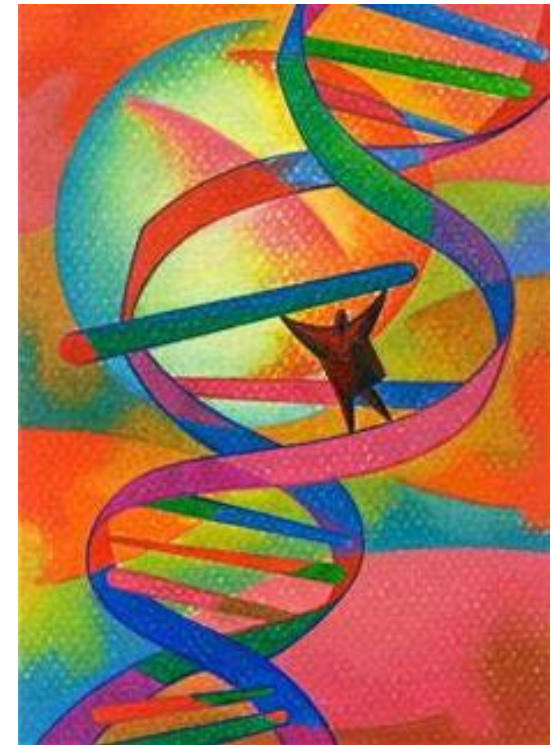
- › Standardisation of methods (ISO and CEN activities).
- › Keep track of developments in (alternative) methods.
- › Provide NRLs with information on developments of relevant (standardised/new) analytical methods.





## 1.2 EURLs working group NGS - objectives

- › Promote the use of NGS across the EURLs' networks.
- › Build capacity on producing and using WGS data within the EU.
- › Ensure liaison with the work of the EURLs and the work of EFSA and ECDC on NGS.
- › Cooperation of 8 biological EURLs; WG meets 2x/year.







## 1.2 EURLs working group NGS - description

- › For different activities related to NGS, guidance documents are prepared, regularly updated and published at EURL websites.
- › Guidance documents made available at website of the EURL leading the activity. Other EURLs provide a link to the documents published by colleague EURLs.
- › See <https://www.eurlsalmonella.eu/publications/analytical-methods> - Next Generation Sequencing (NGS).
- › Organisation with EFSA of second Science meets policy conference on the use of NGS, Parma (hybrid) 5 & 6 Sept '23.
- › Organisation joint EURLs trainings on NGS: 2019 at EURL-*Lm* in Paris; 2022 at EURL-VTEC in Rome; June 2023 at EURL-*Salmonella* in Bilthoven.





## 1.3 Proficiency Tests - objectives

Evaluation of the performance of the NRLs-*Salmonella* for detection and typing of *Salmonella* by means of interlaboratory comparisons (Proficiency Tests).

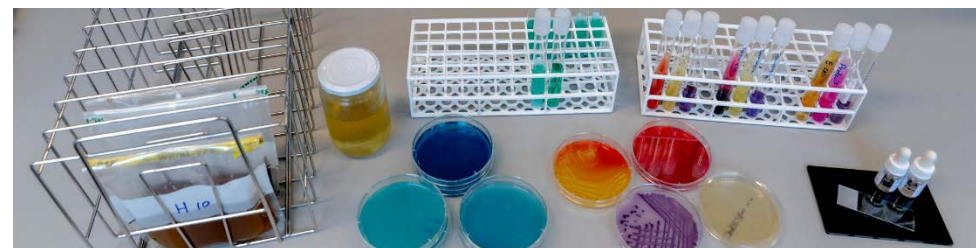




## 1.3 Proficiency Tests - description

Organisation of 3 PTs per year:

- PT on detection of *Salmonella* in food or animal feed samples, including Live Bivalve Molluscs (LBM) every approx. 3 years. Generally organised in March.
- PT on detection of *Salmonella* in samples from the primary production stage (PPS). Generally organised in September.
- PT on typing of *Salmonella* (serotyping, molecular typing). Generally organised in November.





## Activity 2 – Assistance to NRLs

Work Packages:

2.1 Workshop

2.2 Training courses

2.3 Scientific advice and support of NRLs







## 2.1 Workshop

Preferably to be organised as a physical meeting, by the end of May 2024.







## 2.2 Training courses

- › Joint EURLs training on NGS: 2023 in Bilthoven, NL; 2024: location not yet known.
- › Individual trainings of NRLs upon request of NRL or upon advice of EURL (e.g. in case of unsatisfactory performance in PTs).



## 2.3 Scientific advice and support of NRLs



- › Provide scientific and technical assistance to the NRLs-*Salmonella* for the relevant work field.
- › Perform confirmatory testing and/or typing (samples/isolates) for NRLs-*Salmonella* when needed.
- › Perform WGS analysis of isolates of NRLs-*Salmonella* for outbreak investigations.
- › Maintenance of the EURL-*Salmonella* website and updating the information on the website ([www.eurlsalmonella.eu](http://www.eurlsalmonella.eu)).
- › Inform the NRLs of the activities of the EURL and other parties in the relevant work field, as well as of developments in this field.
- › Publication of 4 newsletters per year, through the website.



## Activity 3 Assistance to EC

Work Package:

3.1 Scientific advice and support of European Commission and other organisations





## 3.1 Scientific advice and support EC - objectives

- Provide scientific and technical assistance to EC DG SANTE for the relevant work field.
- Provide assistance to DG SANTE, EFSA and (NRLs of) Member States in case of (international) *Salmonella* outbreaks. Collaborate with EFSA and ECDC for the relevant work field.
- Cooperation with other biological EURLs.







## 3.1 Scientific advice and support EC - description

- › Ad hoc scientific and technical assistance of DG SANTE.
- › Member of 'EFSA-ECDC Advisory Board on the management and sharing of molecular typing data of isolates from human, food, feed, animal, and the related environment for public health purposes'.
- › Assistance of DG SANTE, EFSA, NRLs and ECDC in case of outbreaks, e.g consultation of NRL network for specific information, (sub)typing of suspect isolates (WGS), analysis of data.





# Activity 4 Reagents and reference collections

Work Package:

4.1 Reference strains and reference materials





## 4.1 Reference strains and reference materials

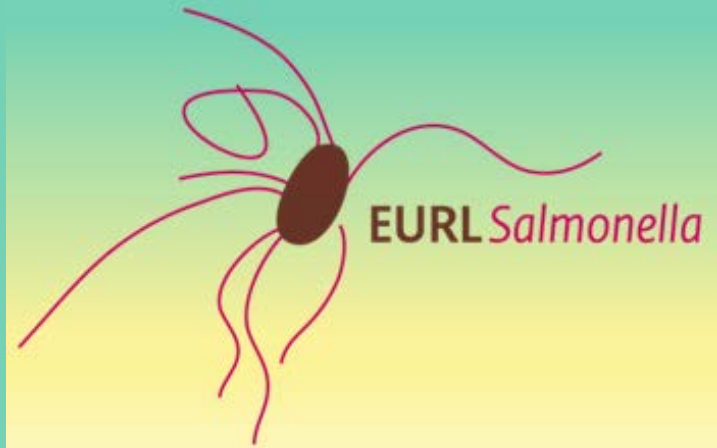
### *Objectives:*

- Supply information on available culture collections and suppliers of microbiological reference materials. Setting up a reference collection of WGS data.

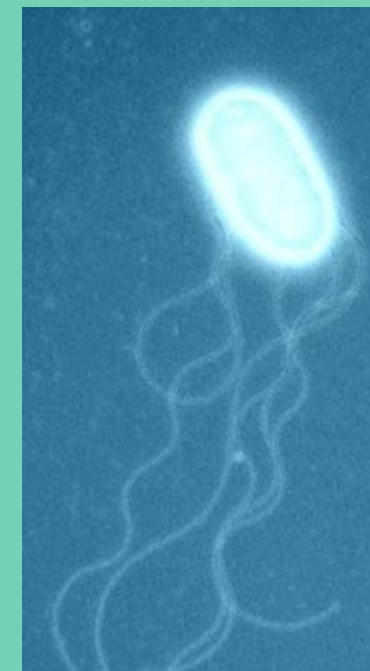
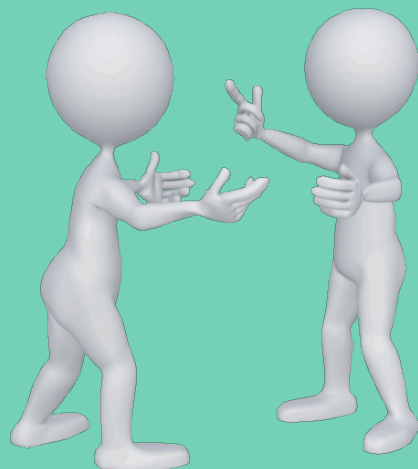
### *Description:*

- Reference to culture collections and reference materials at website:  
<https://www.eurlsalmonella.eu/publications/analytical-methods> - Reference materials
- Maintenance in-house culture collection. Use in PTs; testing, validation, verification of methods; provided to NRLs for specific tests.
- Provide sets of reference strains (SE and STm) for MLVA typing.
- Publication of reference collection of genomes obtained from PTs:  
[https://www.eurlsalmonella.eu/sites/default/files/2023-03/Del2\\_Ref\\_Collection\\_v02Final\\_20230306.pdf](https://www.eurlsalmonella.eu/sites/default/files/2023-03/Del2_Ref_Collection_v02Final_20230306.pdf)
- Link to WKLM scheme at website, keep contact with WHO ref centre.  
<https://www.eurlsalmonella.eu/publications/analytical-methods> - Serotyping





Questions?  
Remarks?  
Other topics?







# Closure

- › After closure we will send a link to an **evaluation form**. Thank you for completing the form by **9 June 2023 at the latest** (info is anonymous)!
- › We plan to publish the **presentations**, in pdf format, on the EURL-*Salmonella* website in the coming week(s). If not allowed, or if amendment is needed before publication, please inform us by e-mail ([EURLSalmonella@rivm.nl](mailto:EURLSalmonella@rivm.nl)) asap.
- › For the ones who gave a presentation(s): please send **abstract**(s) as soon as possible (if not already done), **by 9 June 2023 at the latest**.





# Thank you all!

- › European commission
- › Speakers
- › Participants
- › EURL-*Salmonella* staff

